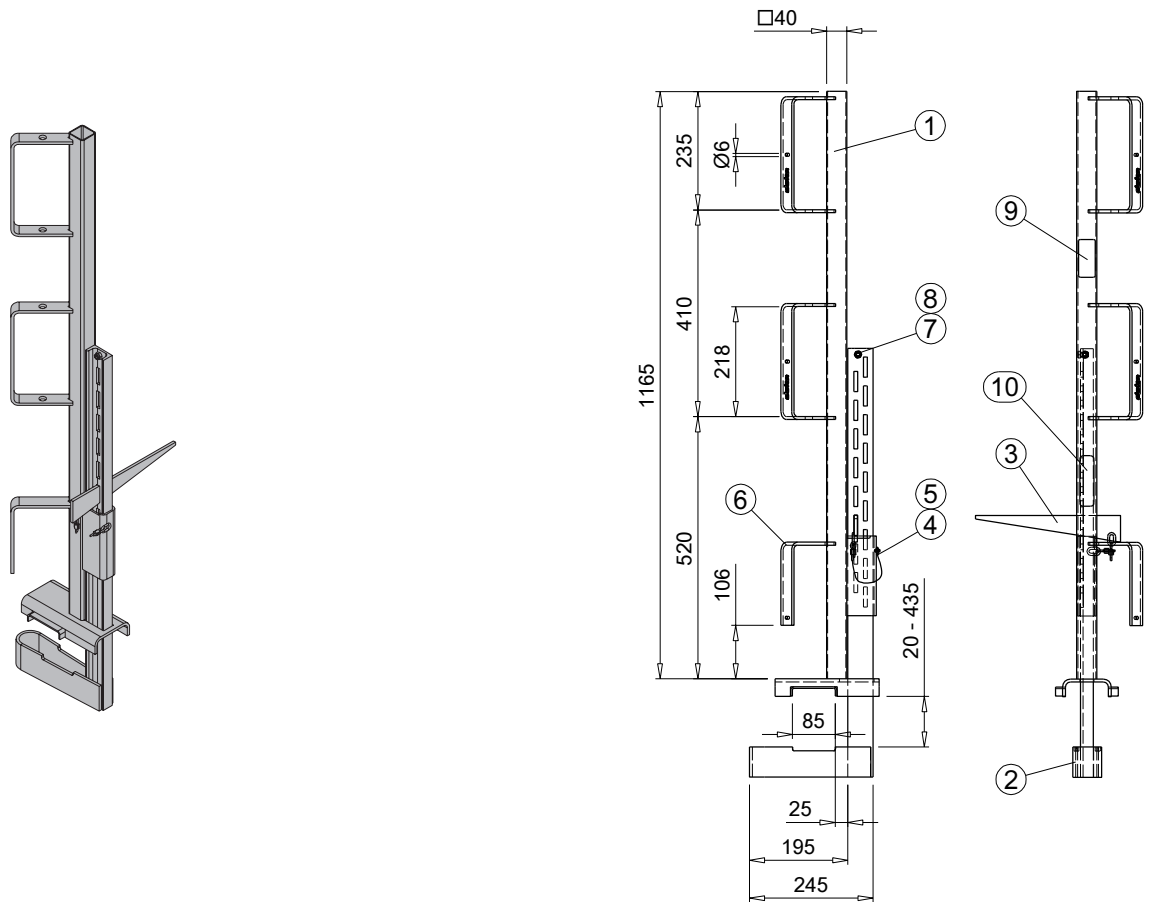


Handrail clamp S

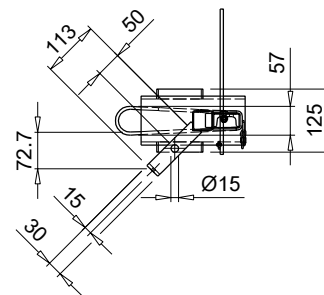
11.45 580470000

Schutzgeländerzwinge S

Galvanised / verzinkt



Erecting safety railings at exposed outer edges.



List of components

Pos.	Name	Art. n°	Piece	Note
1	Railing tube, complete	500470001	1	
2	Height adjustment, complete	500470002	1	
3	Railing clamp wedge 288/6	506456003	1	
4	Securing cable D3/450	506534100	1	
5	Fastening clamp D3,5	504373030	2	
6	Toe-board bracket galv.	500470730	1	
7	Hexagon bolt DIN 933 M8x16 8.8 galv.	019830	1	
8	Hexagon nut DIN 982 M8 self-locking 8 galv.	019336	1	
9	Label "Doka logo" 75x33mm	508247910	1	
10	Label "Marking EN 13374 A" 100x28mm	506460920	1	

Noticeable feature differentiating new model from predecessor:

- GS-label removed
- Label "Marking EN 13374 A" added