

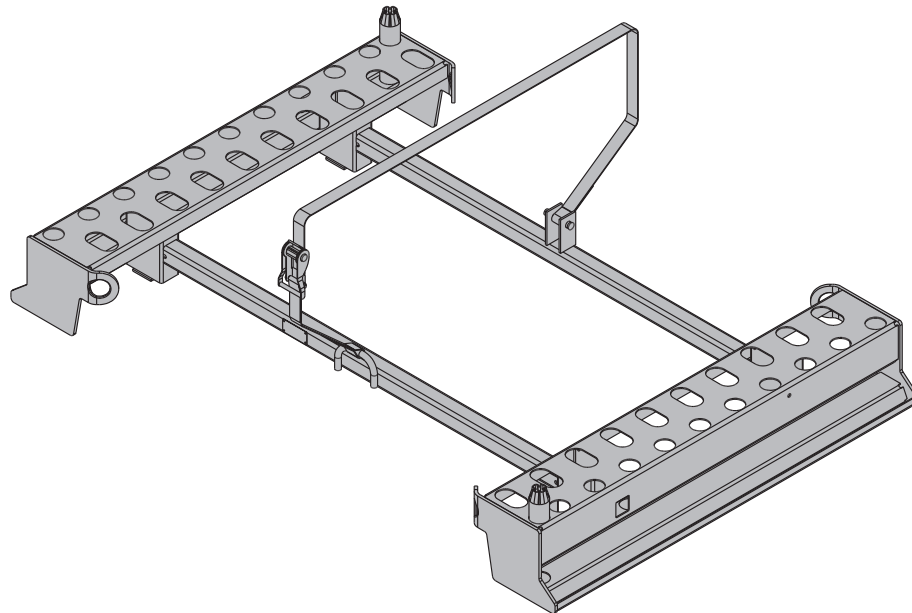
# Doka pallet for Staxo/Aluxo

**Art. n° 582783000**

**1998 models onward**

**2007 models onward**

**2009 models onward**



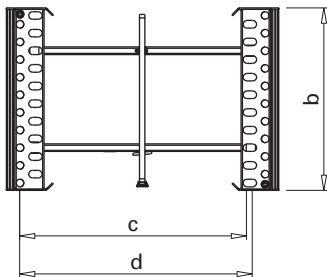
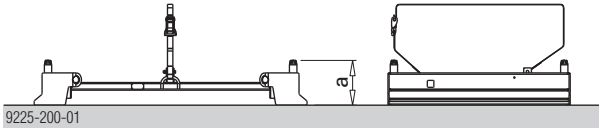
# Basic drawings of product

## Product description

The "Doka pallet for Staxo/Aluxo" is a **transport and storage unit** that is suitable for Staxo, Staxo 100 and Aluxo system frames only.



- Doka accepts no liability for products that have been altered!
- Repairs may only be carried out by the manufacturer!



- a ... 295 mm
- b ... 1200 mm
- c ... 1493 mm
- c ... 1531 mm

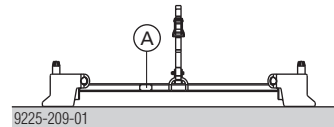
## Before every use

- ▶ Check for any signs of damage or visible deformation.



Damaged or deformed pallets that do not meet the following criteria must be withdrawn from use immediately.

- Crack-free and notch-free welds.
- No deformation
- Rating plate must be in place and clearly legible



A Rating plate

## 1998 models onward

### Data on rating plate

Doka Industrie GmbH, A-3300 Amstetten

Designation: Doka pallet for Staxo/Aluxo

Art.n°: 582783000

Dead weight: 64.6 kg (141.9 lbs)

Max. load: 700 kg (1540 lbs)

Permitted imposed load: 1530 kg

Year of manufacture: see rating plate

## 2007 models onward

### Data on rating plate

Doka Industrie GmbH, A-3300 Amstetten

Designation: Doka pallet for Staxo/Aluxo

Art.n°: 582783000

Dead weight: 64.6 kg (141.9 lbs)

Max. load: 750 kg (1650 lbs)

Permitted imposed load: 1630 kg (3600 lbs)

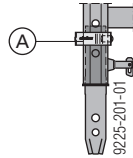
Year of manufacture: see rating plate

# Loading the transport device

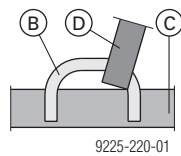


► It is not allowed to mix frames of different heights!

- Unwind the lashing strap from the "Doka pallet for Staxo/Aluxo".
- Fix the connection sleeves of the Staxo or Aluxo frames in the extended position, using the yellow security spring.



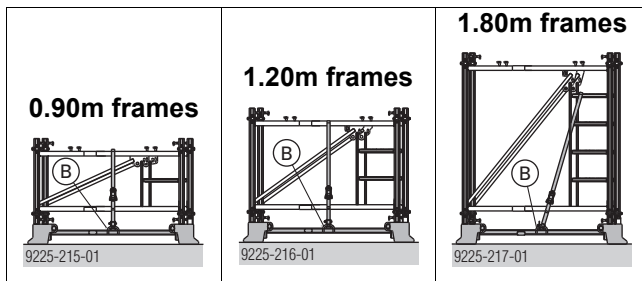
- Insert the legs of the frames into the location holes.
- Loop the lashing strap over the correct transverse profile for the height of the frames on the pallet, and attach it to the belt hook.



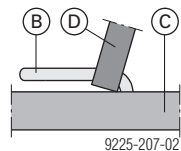
- Close the lashing strap and tighten it carefully.



► Tensioning the lashing-strap too tightly can damage the cross-profiles of the Aluxo frames.



When securing 1.80m high frames on "Pallets for Staxo/Aluxo" that were made before 2009, it **MUST** be ensured that the lashing strap is located in the belt hook exactly as shown.



**A** Security spring (yellow)

**B** Belt hook

**C** Cross profile

**D** Lashing strap

# Using the "Doka pallet for Staxo/Aluxo" as a storage unit

## Storage of filled pallets

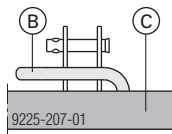
- When **storing** filled stacking pallets, make sure that they are standing **stably** on the ground, and are **stacked correctly**.
- The pallets at the bottom of the stack must be completely and uniformly filled.
- Make sure that the connection sleeves are fixed in place and that the lashing strap is in the right position and is correctly tensioned.

Type of frame	Max. number of pallets	
	Stacked on the site (outdoors); floor gradients of up to 3%	Stacked in the warehouse; floor gradients of up to 1%
Aluxo frame 1.20m	2	4
Aluxo frame 1.80m	1	3
Staxo / Staxo 100 frame 0.90m	4	4
Staxo / Staxo 100 frame 1.20m	3	3
Staxo / Staxo 100 frame 1.80m	2	3

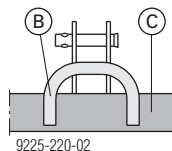
## Storage of empty pallets

- When empty pallets are stacked, the lashing straps must be wound around the vertical profiles, attached to the belt hook and tensioned.

### Models manufactured until 2008



### 2009 models onward

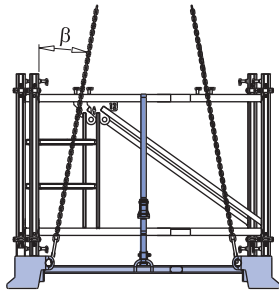


	Type of frame	Max. number of pallets
Stacked on the site	all	17
Stacking in the warehouse	all	27

# Using the "Doka pallet for Staxo/Aluxo" as a load transport device

## Lifting by crane

- Use a suitable lifting chain. (Do not exceed the permitted load capacity). E.g: Doka 4-part chain 3.20m Art.n° 588620000.
- Spread-angle  $\beta$  max. 30°!



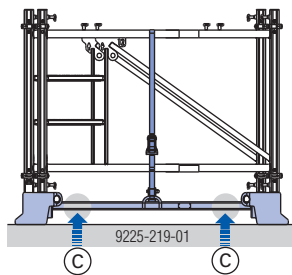
9225-218-01

## Repositioning by forklift truck or pallet stacking truck



- ▶ Make sure the item to be lifted is in the correct centre-of-gravity position and is safe against tipping over!

- The forks of the transport appliances may only be placed beneath the cross profiles of the "Doka pallet for Staxo/Aluxo"!
- Push stacker-truck forks as far apart as possible.



**C** Cross profile

© by Doka Industrie GmbH, A-3300 Amstetten